

Scarf with Clip-On

Bow Set

Gifts In Motion

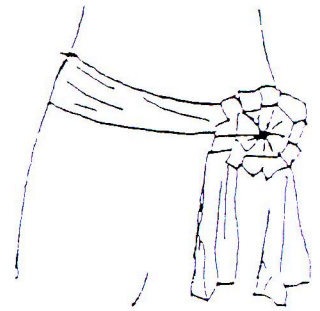
Donna Buffardi

(401) 943-1628

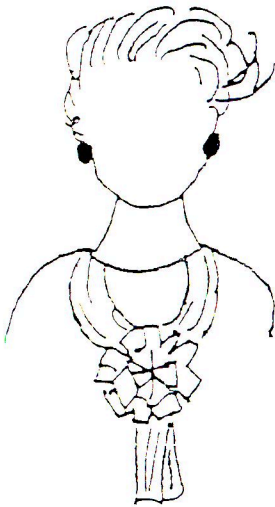
giftsinmotion@cox.net



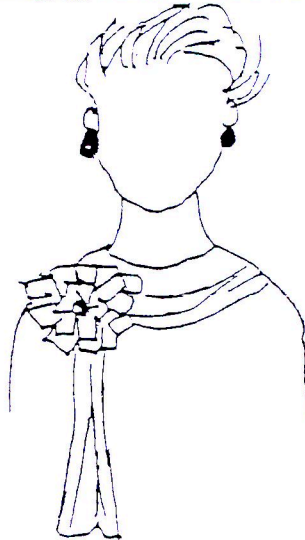
Double scarf and clip bow to fasten a hat.



Use as a belt, clip off to the side.



Clip bow in front.



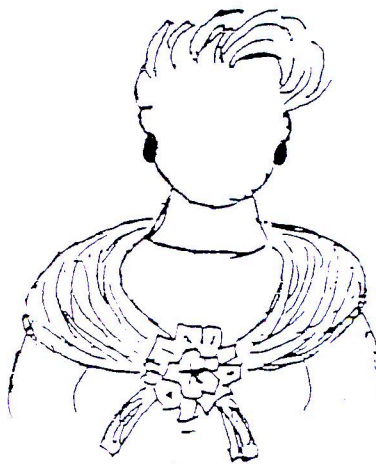
Place scarf loosely around neck clip bow to scarf and shirt.



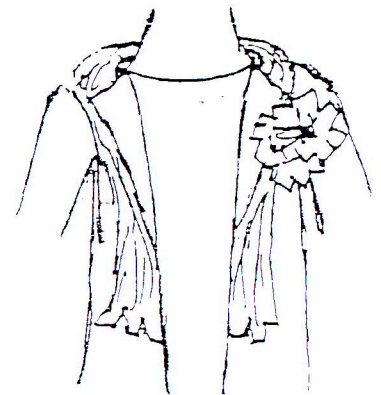
Hang scarf over shoulder. Clip bow to scarf and shirt.



Double up scarf and clip bow onto it.



Drap scarf over shoulders, tie and clip bow on.



Place scarf under jacket collar and clip bow onto it.

**See a live demo on You Tube:
search Donna Buffardi**